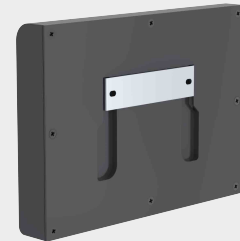
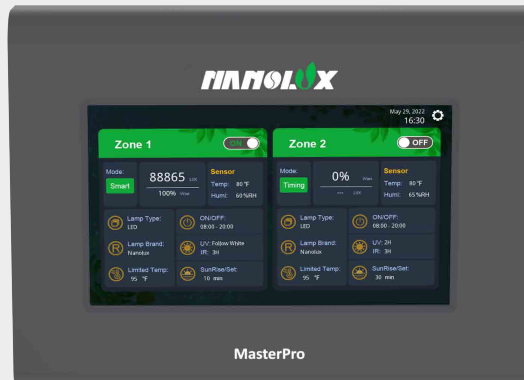


MasterPro CONTROL SYSTEM

MasterPro



MasterPro



Adapter NB15



Data acquisition NB16

FEATURES

- HID/LED dimming controller
- 7 inch Touch screen control
- Control up to 14,400 lamps simultaneously
- 3 control modes: intelligent, timing, manual
- Automatic sunrise/sunset
- Temperature/humidity/illumination detection
- Independent UV and IR dimming

BENEFITS

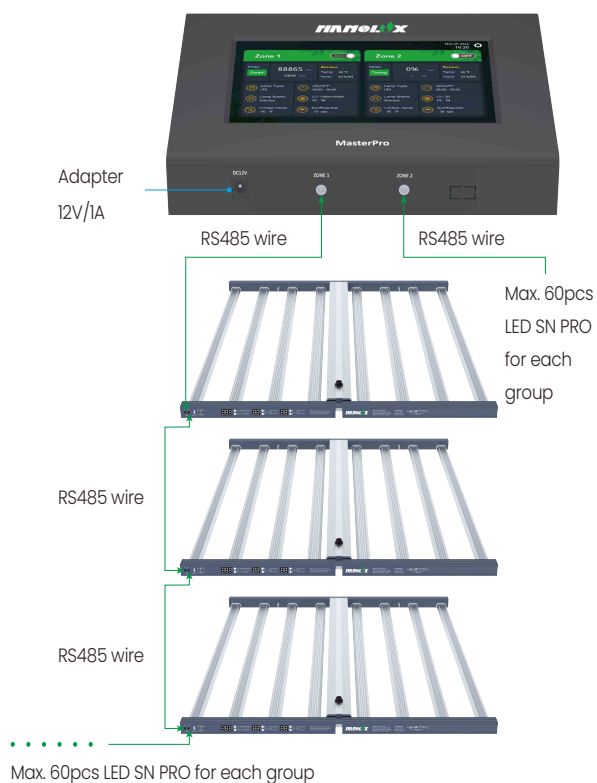
- 7 inch Touch screen control
- HID and LED lamps supported
- Control up to 14400 lamps
- Independent control for 3 light sources

MASTER PRO CONTROL SYSTEM

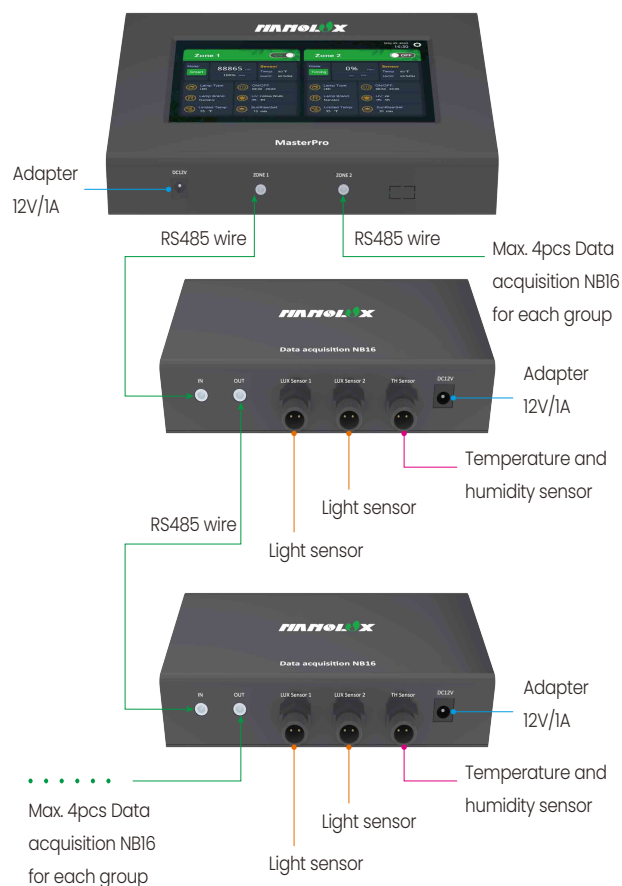
CONNECTION INSTRUCTIONS

Note: Please secure the end of the RS485 wire before connecting to avoid the plug of the RS485 wire coming off the device.

1. Connecting MasterPro to LED SN PRO



2. Connecting MasterPro to Data acquisition NB16

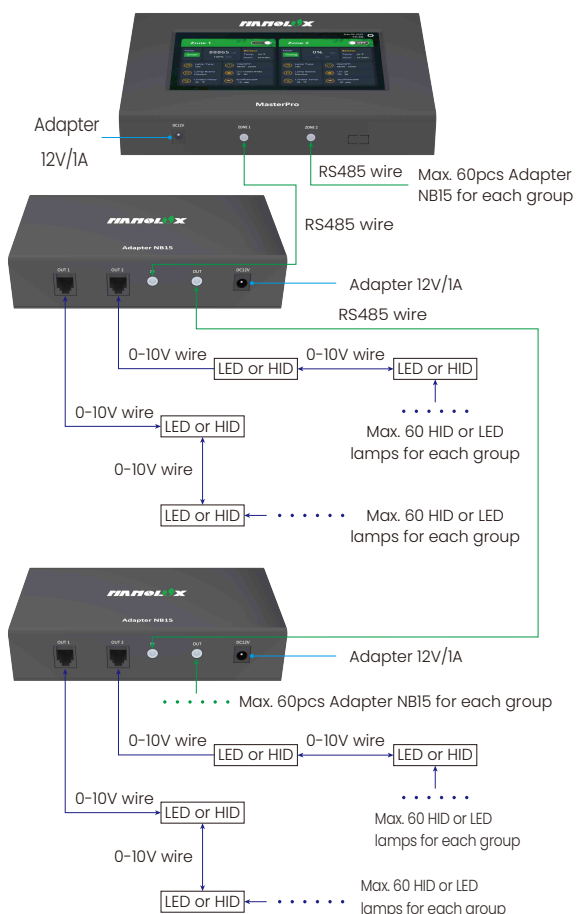


MASTER PRO CONTROL SYSTEM

CONNECTION INSTRUCTIONS

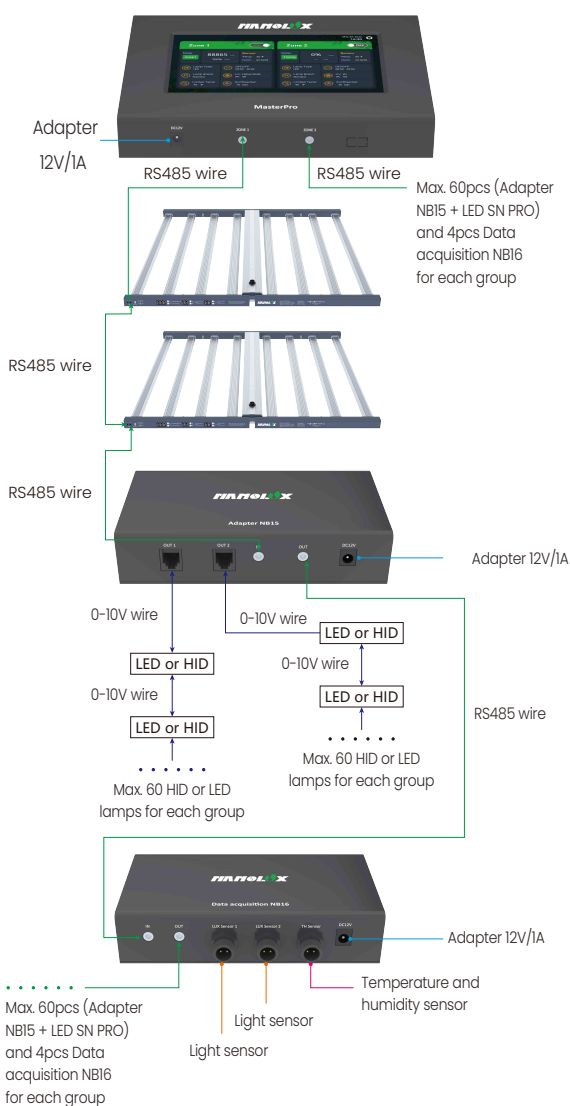
Note: Please secure the end of the RS485 wire before connecting to avoid the plug of the RS485 wire coming off the device.

1. Connecting MasterPro to Adapter NB15



Note: Because HID and LED lamps have separate control modes, each group cannot control both HID and LED lamps at the same time, implying that, two types of lamps cannot be installed in one group.

2. Connecting MasterPro to LED SN PRO & Adapter NB15 & Data acquisition NB16

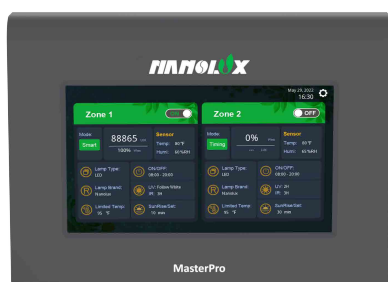


Note: Because HID and LED lamps have separate control modes, each group cannot control both HID and LED lamps at the same time, implying that, two types of lamps cannot be installed in one group.

MASTER PRO

SPECIFICATIONS

PRODUCT MODEL	Master Pro
PRODUCT CODE	80.03.0482
POWER ADAPTOR	100-240Vac 12V/1A Power Adaptor
DISPLAY SCREEN	7 inch display screen, Resolution Ratio 1024×600
MAIN BODY MATERIAL	Aluminum Alloy
MAIN APPEARANCE COLOUR	Black
INPUT VOLTAGE	12V
INPUT CURRENT	1A
CONTROL OUTPUT	2-way RS485 Communication Interface
AVERAGE LIFESPAN	20000H
WORKING TEMPERATURE (°C)	-20°C ~40°C
WORKING HUMIDITY	0-90%
STORAGE TEMPERATURE(°C)	-20°C ~60°C
INSULATION CLASS	Class I
INSTALLATION METHOD	Hanging-type
PROTECTION DEGREE	IP54
PRODUCT DIMENSION	222x162x32MM
PRODUCT NET WEIGHT	0.8KG
PRODUCT GROSS WEIGHT	2.5KG
WARRANTY PERIOD	1 Year
OUTER CARTON DIMENSION(MM)	245x175x150mm
PACKING QUANTITY	1PCS / Carton
OTHERS	Packed with collector



ADAPTER NB15

SPECIFICATIONS

PRODUCT MODEL	Adapter NB15
PRODUCT CODE	80.03.0483
POWER ADAPTOR	100-240Vac 12V/1A Power Adaptor
MAIN BODY MATERIAL	Aluminum Alloy
MAIN APPEARANCE COLOUR	Black
INPUT VOLTAGE	12V
INPUT CURRENT	1A
Main Controller Option:Nanolux,Output Voltage	OFF: 1V, LED: 2~10V; HID: 5~11V
Main Controller Option:Other,Output Voltage	OFF: 0V , LED: 2~10V; HID: 5~11V
AVERAGE LIFESPAN	20000H
WORKING TEMPERATURE (°C)	-20°C~40°C
WORKING HUMIDITY	0~90%
STORAGE TEMPERATURE(°C)	-20°C~60°C
INSULATION CLASS	Class I
INSTALLATION METHOD	Hanging-type
PROTECTION DEGREE	IP54
PRODUCT DIMENSION	155x85x34mm
PRODUCT NET WEIGHT	0.25KG
PRODUCT GROSS WEIGHT	1.1KG
WARRANTY PERIOD	1 Year
OUTER CARTON DIMENSION(MM)	250x100x105mm
PACKING STYLE	Ordinary Carton Packing
PACKING QUANTITY	1PCS / Carton
OTHERS	Must be used with MasterPro



DATA ACQUISITION NB16

SPECIFICATIONS

PRODUCT MODEL	Data acquisition NB16
PRODUCT CODE	80.03.0484
POWER ADAPTOR	100~240Vac 12V/1A Power Adaptor
MAIN BODY MATERIAL	Aluminum Alloy
MAIN APPEARANCE COLOUR	Black
INPUT VOLTAGE	12V
INPUT CURRENT	1A
Number of Sensor Interface	2 light sensor interfaces + 1 temperature and humidity sensor interface
Light Sensor	Measuring light range: 0~200000Lux, the maximum allowable error of light is $\pm 7\%$, repeatability test error: $\pm 5\%$
Temperature and Humidity Sensor	Test temperature range: -20°C ~ 120°C , accuracy: 1°C ; measurement humidity range: 5%RH~90%RH, humidity accuracy: 5%
AVERAGE LIFESPAN	20000H
WORKING TEMPERATURE ($^{\circ}\text{C}$)	-20°C ~ 40°C
WORKING HUMIDITY	0~90%
STORAGE TEMPERATURE($^{\circ}\text{C}$)	-20°C ~ 60°C
INSULATION CLASS	Class I
INSTALLATION METHOD	Hanging-type
PROTECTION DEGREE	IP54
PRODUCT DIMENSION	155x97x34mm
PRODUCT NET WEIGHT	0.3KG
WARRANTY PERIOD	1 Year
OUTER CARTON DIMENSION(MM)	250x100x105mm
PACKING STYLE	Ordinary Carton Packing
PACKING QUANTITY	1PCS / Carton
OTHERS	1 light sensor and 1 temperature and humidity sensor works with MasterPro

